



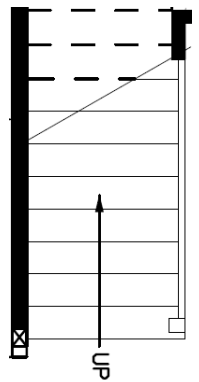
Understanding your Floor Plan

Your designer or contractor may provide you with a floor plan. It will use a variety of symbols to represent building elements, and include the locations and types of fixtures, doors, windows, switches, receptacles, appliances, and more. An accurate layout matters!

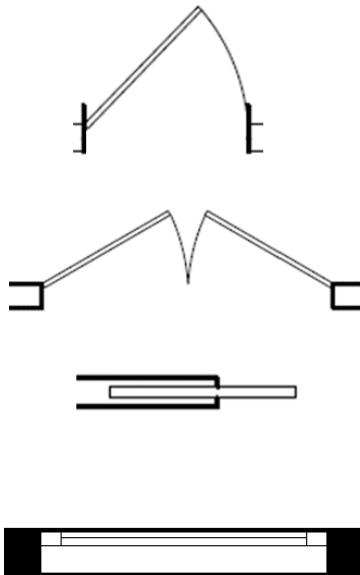
Common floor plan symbols:

 Exterior wall

 Interior wall

 Stairs
A series of parallel lines with an arrow indicating direction of travel up to the next floor. Where the stair rises 3 ft above the floor it is cut with a diagonal line. Stairs above the "cut line" are shown as dashed lines.

 Ceiling Transition like a bulkhead or Overhead Fixtures like wall cabinets



Single Door
Shows which side has the hinges and which room the door opens into.

Double or French Door

Pocket or Sliding Door

Window (glass and frame)
Casement windows may show a line or an arc to indicate the direction that the window opens.



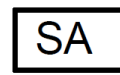
Door Type 01 – Fire-Rated



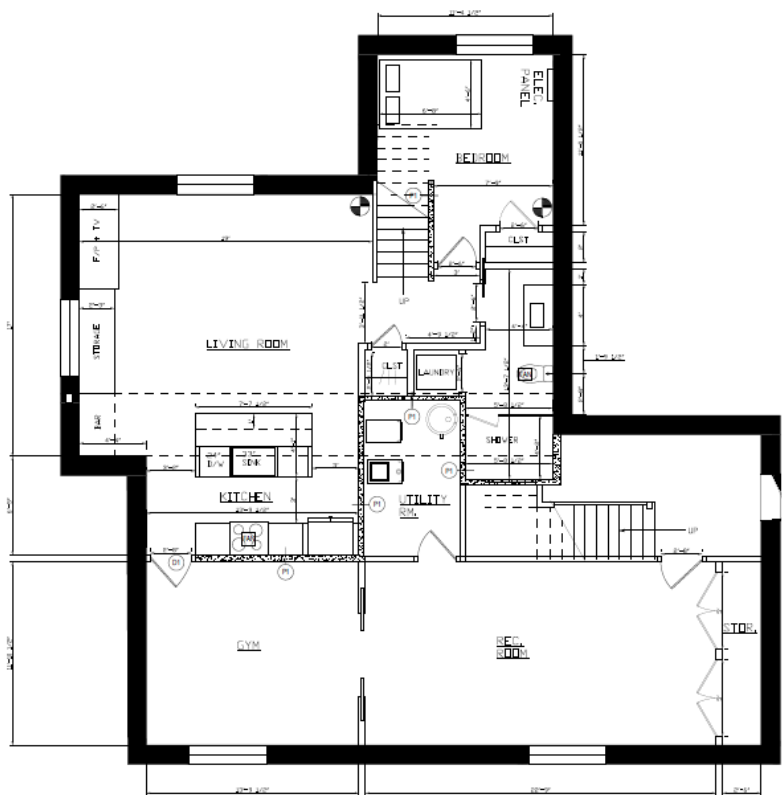
Fan



Return Air Register



Supply Air Register



PROPOSED LOWER LEVEL

TIP...
Lay painters tape on the floor of your empty space to outline where the walls and elements will go in order to better visualize how the final result will look and function.